



PROTECT YOURSELF!

PROTECT YOUR PARTNERS!

GET VACCINATED

Mpox spreads through close, prolonged contact (skin-to-skin), especially during intimate or sexual contact.

The virus usually causes skin **lesions (e.g., rash, ulcers) around the mouth, genitals and anus.** Lesions can also appear elsewhere on the body. Other symptoms of the disease can include:

- Swollen lymph nodes
- Fever
- Extreme fatigue
- Headaches
- Muscle and joint pain
- Night sweats

Mpox vaccination reduces or prevents symptoms.



PROTECT YOURSELF!

PROTECT YOUR PARTNERS!

GET VACCINATED

Mpox spreads through close, prolonged contact (skin-to-skin), especially during intimate or sexual contact.

The virus usually causes skin **lesions (e.g., rash, ulcers) around the mouth, genitals and anus.** Lesions can also appear elsewhere on the body. Other symptoms of the disease can include:

- Swollen lymph nodes
- Fever
- Extreme fatigue
- Headaches
- Muscle and joint pain
- Night sweats

Mpox vaccination reduces or prevents symptoms.



PROTECT YOURSELF!

PROTECT YOUR PARTNERS!

GET VACCINATED

Mpox spreads through close, prolonged contact (skin-to-skin), especially during intimate or sexual contact.

The virus usually causes skin **lesions (e.g., rash, ulcers) around the mouth, genitals and anus.** Lesions can also appear elsewhere on the body. Other symptoms of the disease can include:

- Swollen lymph nodes
- Fever
- Extreme fatigue
- Headaches
- Muscle and joint pain
- Night sweats

Mpox vaccination reduces or prevents symptoms.

Did you know that **2 doses of vaccine are needed** to be fully protected?

Vaccination is accessible **with or without an appointment.**

To book an appointment and for more information:



drspsmtl.ca/mpox
514-644-4545

Eligibility criteria are indicated on the back.

Did you know that **2 doses of vaccine are needed** to be fully protected?

Vaccination is accessible **with or without an appointment.**

To book an appointment and for more information:



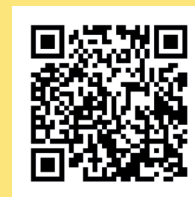
drspsmtl.ca/mpox
514-644-4545

Eligibility criteria are indicated on the back.

Did you know that **2 doses of vaccine are needed** to be fully protected?

Vaccination is accessible **with or without an appointment.**

To book an appointment and for more information:



drspsmtl.ca/mpox
514-644-4545

Eligibility criteria are indicated on the back.

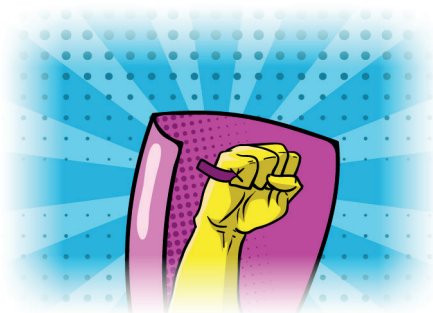
PEOPLE ELIGIBLE FOR THE VACCINE:

- Gay, bisexual, heterosexual, pansexual or queer men, and trans feminine, trans masculine, two-spirit, non-binary or non-conforming people who have sexual contacts with at least one male partner
- Sex workers
- Staff or volunteers in LGBTQ+ socialization venues or events where there are sexual contacts
- People who have been in direct contact in the past 14 days (skin-to-skin) with someone infected with mpox.
- People who have been in close physical contact (<1 meter) for at least 3 consecutive hours during the past 14 days (skin-to-skin) with someone infected with mpox.
- People who have been in direct contact in the past 14 days with potentially contaminated objects or bedding in venues where sexual contacts have occurred



PEOPLE ELIGIBLE FOR THE VACCINE:

- Gay, bisexual, heterosexual, pansexual or queer men, and trans feminine, trans masculine, two-spirit, non-binary or non-conforming people who have sexual contacts with at least one male partner
- Sex workers
- Staff or volunteers in LGBTQ+ socialization venues or events where there are sexual contacts
- People who have been in direct contact in the past 14 days (skin-to-skin) with someone infected with mpox.
- People who have been in close physical contact (<1 meter) for at least 3 consecutive hours during the past 14 days (skin-to-skin) with someone infected with mpox.
- People who have been in direct contact in the past 14 days with potentially contaminated objects or bedding in venues where sexual contacts have occurred



PEOPLE ELIGIBLE FOR THE VACCINE:

- Gay, bisexual, heterosexual, pansexual or queer men, and trans feminine, trans masculine, two-spirit, non-binary or non-conforming people who have sexual contacts with at least one male partner
- Sex workers
- Staff or volunteers in LGBTQ+ socialization venues or events where there are sexual contacts
- People who have been in direct contact in the past 14 days (skin-to-skin) with someone infected with mpox.
- People who have been in close physical contact (<1 meter) for at least 3 consecutive hours during the past 14 days (skin-to-skin) with someone infected with mpox.
- People who have been in direct contact in the past 14 days with potentially contaminated objects or bedding in venues where sexual contacts have occurred

